

AROLMRA Racing Rules



**Australian
Ride On Mower Racing
Association Inc. A0040218E**
ABN 23 795 075 312

AROLMRA Racing Rules July 2023

PREAMBLE WITHOUT PREJUDICE

The Australian Ride On Lawn Mower Racing Association Inc., (AROLMRA) is a non-profit organization and run primarily for racing enthusiasts and their friends while contributing in some way to the local community.

Members race for the love of competition. All who share this philosophy are welcome to join AROLMRA and participate in its activities.

These rules are designed for the safe conduct of lawn mower racing in Australia and to establish acceptable requirements for such events.

These rules are not an admission that AROLMRA has the duty to warn participants of potential hazards of participation. Moreover, these Rules are only intended as a guide for the conduct of the sport and are in no way a guarantee against injury to the person or property of participants, spectators or others, nor are they a substitute for the due care which should be exercised by participants in any event.

Finally, AROLMRA assumes no liability for any injury or death or property damage, and all participants shall execute a release of liability discharging AROLMRA from such liability. By entering and participating in events, all participants agree to abide by these Rules which may be amended from time to time.

Of paramount importance to all organisers, competitors, officials, spectators, and any other person whomsoever attending any event shall be the safety of those persons. These Rules should be read and interpreted with this in mind.

AROLMRA Racing Rules

Table of Provisions:

Sections:

Part 1 – Preliminary

Part 2 – Driver Eligibility

Part 3 – Mower Eligibility

Part 4 – Mower Construction

Part 5 -- Fuel

Part 6 – Driver Equipment

Part 7 – Pits and Track Areas

Part 8 – Technical Inspections

Part 9 -- General Provisions

Part 10 – General Conduct

Part 11 – Procedures

Schedules:

Schedule 1 ³/₄ Guidelines for Technical Inspections

Schedule 2 ³/₄ Competition Indemnity Form

Schedule 3 ³/₄ Minor Release Form

AROLMRA Racing Rules

Part 1 – Preliminary:

1. Purposes:

The main purpose of these Rules is;

1. To provide for the safe conduct of lawn mower racing in Australia; and
2. To provide specifications for racing lawn mowers in each category as may be amended from time to time; and
3. To provide a safe environment for all persons attending events; and
4. To provide that the sport of lawn mower racing in Australia remains a competitive family sport without fear or favour

2. Commencement:

These Rules shall come into operation on July 2023 having been approved for commencement by a majority vote of financial members present at the committee meeting convened for that purpose and in accordance with the Model Rules of the Association and the provisions of the Associations Incorporation Act 1981.

3. Definitions:

In these Rules –

“**Association or AROLMRA**” means the Australian Ride On Lawn Mower Racing Association Inc.

“**Driver**” means a competitor in any event.

“**Event**” includes any competition practice or demonstration event

“**Helmet**” means a full face or motor-cross style motorcycle rider’s helmet or race car drivers helmet of superior quality which complies with Australian Standards AS1698

“**Intoxication**” includes being affected by intoxicating liquor or drug, prohibited substance or illegal drug but does not include being affected by medicines which have been prescribed and which are being used in the manner prescribed.

“**Model Rules**” means the Model Rules of the Association as prescribed in s.21 of the Associations Incorporation Act 1981.

“**Motor**” in these Rules means an internal combustion engine naturally operated by any fuel permitted by these Rules

“**Regulations**” includes rules

AROLMRA Racing Rules

“**Restricted Driver**” includes—

- a) A driver who has not reached the age of 18 years; or
- b) A driver of any age who, in the opinion of AROLMRA officials, is required to undergo a test for ability and competence before being permitted to participate in any event

“**Unrestricted driver**” is a driver over the age of 18 or younger if deemed competent by the AROLMRA competency panel.

“**Rules**” includes regulations

“**Ride on Lawn Mower**” means a motor driven vehicle which has been specifically designed and sold commercially for mowing residential type lawns.

“**Standard mower**” means a ride on lawn mower, which has not been altered in any way from the manufacturer’s original specifications.

“**Standard Modified mower**” means a ride on lawn mower, which is fitted with a vertical shaft type¹ motor driving a belt or chain or belt/chain combination to the drive pulleys or gears

“**Super modified class “C”**” means a ride on lawn mower which has been altered from the manufacturer’s specifications in any structural or mechanical aspect and has been fitted with a motor which does not exceed 200cc capacity.

“**Super modified class “B”**” means a ride on lawn mower which has been altered from the manufacturer’s specifications in any structural or mechanical aspect and has been fitted with a motor which does not exceed 250 cc capacity.

“**Super modified class “A”**” means a ride on lawn mower which has been altered from the manufacturers specifications in any structural or mechanical aspect and has been fitted with a motor which does not exceed 450 cc capacity.

“**Crew**” means guests (1) of the driver over the age of 14 who is required to assist the driver in the preparation, repair etc. of the vehicle and who is permitted to enter and remain in the pit area.

“**Grid**” means starting line

“**Pit area**” means a separate area set aside for drivers and/or pit crew to perform any works on mowers, refuelling operations, or the performance of dangerous tasks including the use of welders, power tools and similar operations.

¹ Vertical shaft type motor should be read as meaning a motor of the Briggs and Stratton, Honda or similar lawn mower engine which uses a vertical shaft to operate the blades or cutters and the engine drives a chain or rubber belt (or both) to drive the driving axle through a pulley system.

AROLMRA Racing Rules

“**Pit crew**” means crew

“**Pit pass**” means a card or method of identification to be issued to officials, pit crews, drivers or any person authorized under these Rules to have access to restricted areas including pit and track areas.

“**Guest Pit pass**” means a pit pass that must be issued by the President or Vice-President

“**Steward or Marshall**” means an official or person assigned the task of supervising behaviour and other matters in the pit, track areas.

“**Track area**” means track and includes the racetrack and surrounding area to any external boundaries, which have been clearly defined as an area prohibited for access by unauthorized persons.

“**Unauthorised persons**” include any persons not displaying a “pit pass”.

Part 2—Driver Eligibility:

4. Drivers to be Members:

All drivers participating in any event shall be financial members of AROLMRA

5. Minimum age for unrestricted drivers:

The minimum age for unrestricted drivers shall be 18 years, drivers under 18 years can apply to the AROLMRA competency panel and if meeting requirements with panel discretion can be eligible to race;

- C Class (min age for C Class is 12 years) or
- B Class (min age for B Class is 17 Years).

6. Restrictions apply to restricted drivers:

Any restricted driver, who has obtained and produced a properly completed “Minor’s Release Form” and who has also produced a properly completed “Release from Liability” document in its current form—

- a) May request that the AROLMRA Officials grant his or her admission into a “Junior” class event; and
- b) May need to demonstrate an understanding of the flags and a competence in handling a “Junior” lawn mower of no more than 110cc

A restricted driver can also include a driver of any age, who before being permitted to participate in any event, must demonstrate to AROLMRA Officials, that he/she is competent in the handling of their mower, in race conditions.

7. Permission required for drivers under 18 years:

All drivers under the age of 18 years must produce a written and signed “Minor Release” form granting permission from a parent or Legal Guardian to participate or assist in any event.

AROLMRA Racing Rules

8. Driver to sign release form liability:

All drivers before being eligible to participate in any event shall sign and submit a release or indemnity in the prescribed form discharging AROLMRA from all liability.

9. Eligible drivers:

Eligible drivers are drivers who have submitted the required forms and have paid the entry fee

10. Drivers and Classes:

Drivers who apply to move up a class for a specific event will only be permitted to do so with committee approval and the majority vote for the affirmative from the racers competing in the class in which the lower class rider would like to compete. E.g. B Class to move up to A Class for a specific meet.

If approved, rider must remain in set class for the duration of the meet and not swap between the classes. This rider is NOT eligible for championship points at this specific meet, however can still place 1st, 2nd, 3rd in the higher class for the day.

This option is not available to junior participants.

Part 3—Mower Eligibility:

11. Eligible mowers:

Events are open to all mowers which comply with the provisions of these Rules.

***Blades or cutters to be removed.**

“**Standard mower**” means a ride on lawn mower, which has not been altered in any way from the manufacturer’s original specifications.

“**Standard Modified Mower**” means a **ride on lawn mower, which** is fitted with a vertical shaft type² motor driving a belt or chain or belt/chain combination to the drive pulleys or gears

“**Junior modified class “J”**” means a ride on lawn mower which has been altered from the manufacturer’s specifications in any structural or mechanical aspect and must be fitted with a 110cc capacity engine, restricted gear set of 13 or 14 tooth front and 49 tooth rear and also a restricted tyre size of 16-6.50 x 8 – Fuel Injection is allowed.

“**Super modified class “C”**” means a ride on lawn mower which has been altered from the manufacturer’s specifications in any structural or mechanical aspect and has been fitted with a motor size up to 200cc capacity – 4 stroke, naturally aspirated, carburetted/fuel injected, only. (2 Stroke Not Permitted)

² Vertical shaft type motor should be read as meaning a motor of the Briggs and Stratton, Honda or similar lawn mower engine which uses a vertical shaft to operate the blades or cutters and the engine drives a chain or rubber belt (or both) to drive the driving axle through a pulley system.

AROLMRA Racing Rules

“**Super modified class “B”** means a ride on lawn mower which has been altered from the manufacturer’s specifications in any structural or mechanical aspect and has been fitted with a motor size up to 201 - 250cc – 2/4 stroke, naturally aspirated, carburetted/fuel injected only.

“**Super modified class “A”** means a ride on lawn mower which has been altered from the manufacturer’s specifications in any structural or mechanical aspect and has been fitted with a motor size between 251cc and 450cc – 2/4 stroke, naturally aspirated, carburetted/ fuel injected only.

Part 4 -- Mower Construction:

AROLMRA strongly encourages new drivers to consult a committee member during the building process of the mower with any queries. Contact details for committee members are available on the AROLMRA website.

**Certain restrictions are in place to provide an entry level, plus a level for those wishing to race at a less frantic pace and still enjoy their motorsport. Standard Modified Class mowers are basically standard, as supplied from manufacturer, with only the barest of modifications allowed - factory guards etc. must be maintained. Any modifications required or desired must be submitted to committee prior to commencement of work to ensure that alterations will not interfere with the integrity of the class - Which is an entry level mower’.*

11. Standard Modified:

- . The limit for engines is 14hp and below and this must be verifiable by the original manufacturers Model Number and/or Engine Number. Should these details be not available, then the mower will only be qualified to compete in the super modified class of racing.
- . Exhaust is free design, whilst still remaining at acceptable noise level
- . Standard safety equipment as specified for all other classes must be adhered to i.e. lanyard brakes must work efficiently, auto return throttle etc.
- . Driveline must be standard available ride-on mower equipment
- . The mower may be lowered, but must not be lower than 200mm from the ground, measured from the lowest part of the chassis. The only exclusion is the actual trailing arm in the steering at the bottom of the kingpin, if that arm is mounted as standard at the bottom of the kingpin assembly. (Most arms are mounted above)... All steering rods from this point back must slope upward so as to adhere to the 100mm clearance rule. 200mm clearance must be maintained under the side steps of the mower. **Exhausts are to be mounted as high to the body as possible.**
- . Driver seat may be lowered, but only by bolting it directly to centre bodywork. Cutting it into the guards or bodywork is NOT permitted.
- . The front cross member may be bolted to stop lateral movement. The castor and camber angle may be altered. To this end, fabrication of a new cross member and kingpin arrangement is allowed, within the tolerances.
- . Where no running board is fitted as standard (i.e. Rover Rancher) a suitable running board to prevent feet from becoming entangled with wheels, must be fitted.

AROLMRA Racing Rules

12. Mower to be readily recognized as a mower:

Mower is to be recognized as a commercially available domestic ride on lawn mower. Modifications to any body panels are permitted although original manufactured type materials must be used.

I.e. Mild steel must be replaced with mild steel, plastic must be replaced with plastic. The exclusion is the bonnet.

Bonnets can be plastic, mild steel or fiberglass but must still be recognized as a commercially available domestic ride on lawn mower.

13. Subsequent technical inspection requirement:

Any mower deemed ineligible for participation must be re-inspected by the Technical Inspector/Scrutineer prior to participation in any race.

14. Motors and engines:

No turbo/supercharged engines are permitted. Only internal combustion engines naturally aspirated and carburetted/fuel injected, operated by any fuel permitted under the provisions of these Rules will be allowed.

15. Mower Blades:

All blades or cutters are to be removed

16. Cut-off switch requirement:

All participating mowers shall be fitted with an operational cut off switch commercially available; (this excludes homemade) and which is connected to the driver by means of a lanyard.

17. Petrol Tanks:

Petrol tanks are to be constructed of an approved type; (no plastic bottles) and need to be secured and covered.

18. Brake requirements for modified mowers:

Mowers must be fitted with an effective rear braking system only, which will slow both wheels simultaneously. No front brakes fitted at all.

19. Sharp or dangerous protrusions:

Mowers which have sharp or dangerous protrusions shall be deemed ineligible for participation until such sharp or dangerous protrusions have been made safe or removed.

20. Guards/Belly pans:

Guards/Belly pan must be covering chains and constructed of mild steel only.

21. Handlebars:

Handlebars constructed of hollow tubing, which are fitted to a ride on lawn mower, shall be deemed unsafe unless the ends of the handlebars are solidly and securely blocked or plugged. Steering mechanisms must be securely fitted.

AROLMRA Racing Rules

22. Bonnets:

Bonnets must be properly secured in a closed position.

23. Suspension:

Mowers shall not be fitted with suspension to the front or the rear wheels; however springs under the seat as such are permissible.

24. Batteries:

Batteries shall be securely mounted.

25. Nudge bars:

Rear or front nudge bars are not permitted.

26. Grab Rail Permitted:

Provided it remains behind Panelling, is no more than 50mm below rear panelling, maximum width 25mm. Maximum of 75mm from Panel to bottom of Rail. Reinforcing of body panels permitted.

27. Maximum width of mowers:

The maximum width of any mower shall be 1100 mm (43.3") at the widest point.

28. Maximum length of mowers:

The maximum length of any mower shall be determined by the structural soundness of any lengthening processes.

29. Chassis:

Chassis rails must be made of minimum 50mm x 25mm x 2.5mm RHS, mild steel only. No laddered or trussed chassis allowed

30. Front Axle:

Non pivoting, securely attached to chassis

31. Rear Axle:

One piece, minimum 25mm in diameter and securely mounted to chassis.

32. Seat:

Seat must be securely and safely attached to mower.

33. Tyres:

Tyres, which are fitted to any competition mower, must comply with the following—

- a) Turf Tyres ONLY
- b) Can be up to a Max Diameter of 20.5" on Rear and Max Diameter of 16" on Front.
- c) All front tyres must have tubes
- d) Grooved Tyres are not permitted.
- e) No Racing Tyres.

AROLMRA Racing Rules

34. Wheel Rims:

Wheel rims shall be of steel or alloy only and be of a one piece or welded construction. No two-piece rims are permitted (No Beadlock rims allowed).

35. Race Numbers:

- a) Race numbers will be issued by the AROLMRA Secretary
- b) Race numbers shall be clearly displayed on both sides towards the front, and on the rear of all mowers.
- c) Race numbers shall be minimum 100mm in height.
- d) Race numbers shall be of a contrasting colour to that of the mower.
- e) Every mower must have the letter of their class displayed with their numbers along with the Prefix of AR.

36. Red dust light:

All mowers must have a RED DUST light fitted to the rear of the mower and should be operational with the ignition on. A mower without their own battery/charging system should use a bicycle style LED.

37. Headlights:

No glass headlights

38. Footrest:

Footrests to have a non-slip surface and if the footrests have sides, then must be fully enclosed

39. Log Book:

Each mower is to have a current log book which is obtained when membership is paid. Log books must be presented to the Scrutineer and presented with indemnity forms to race organizers prior to commencement of racing. Logbooks will be kept by race officials and are to be collected at the end of the days' events enabling further instructions to be recorded.

Any lost, forgotten or damaged logbooks will incur a \$10 replacement fee and may mean ineligibility to participate in the day's competition.

40. Mower eligibility:

If any mower that was built and had been approved to race at any time prior to 30th June 2015 is deemed to be structurally ineligible to race due to implementation of a new rule or rewording of an existing rule, providing the change was not made for safety reasons, the rider may apply to the committee for that mower to be exempt from that particular wording. If the committee agrees that the issue with the mower is deemed not a safety issue, then the mower must be fully scrutineered and the reason for exemption noted and signed off in the Log Book.

Any modifications or adaptations to any AROLMRA rulings must be made in writing 7 days prior to a committee meeting and are subject to committee approval.

AROLMRA Racing Rules

41. Visiting Club Mowers:

Visiting mowers can compete at AROLMRA events for a maximum of up to 4 AROLMRA events per season, provided that the Rider is currently a financial member of an active mower racing club, and the mower is logbook compliant with their own Club Build/Safety Rules

***Committee to be notified Minimum 7 days prior to the Event.**

Part 5—Fuel

42. Permissible fuels:

Petroleum or gasoline products commonly referred to as; super, avgas, unleaded, lead replacement and premium unleaded-, fuels are permitted fuels

43. Prohibited fuels:

Fuel petroleum or gasoline products-

- a) Not described in **41**; or,
- b) Is a fuel commonly referred to as nitrous oxide, N.O.2, laughing gas; or,
- c) Is a fuel commonly referred to as methanol or alcohol; or,
- d) Is any fuel commonly referred to as LPG or liquid petroleum gas; or,
- e) Is any fuel which is stored in a pressurized tank or container.

Part 6- Driver Equipment

43. Helmet:

Every driver shall wear a protective helmet, which complies with these Rules and Australian Standards AS1698, while on the track area; which

- a) fits snugly on the head; and
- b) must be securely buckled when the driver is operating a vehicle on the track area
- c) If using a motor-cross style helmet, then goggles must be worn

But does not include hard hats, bicycle rider`s helmets or other safety equipment of a lesser quality

44. Neck Brace:

Drivers are required to wear an Australian standard motocross or go-kart neck brace correctly fitted and fastened securely.

45. Clothing:

Every driver shall wear full body clothing, which is constructed of substantial material and which is of a one piece construction (one piece overalls), or in the case of a two piece outfit it shall be of motocross quality or better.

Drivers are recommended to wear body armour or adequate padding in addition to clothing.

Juniors are required to wear full body armour.

Drivers are required to wear motocross or leather gloves.

Every driver shall wear closed leather toe footwear of substantial construction and must cover ankles. Runners and footwear of lesser quality will not be permitted. Should leather toe footwear have laces, they are recommended that they are taped for safety reasons.

AROLMRA Racing Rules

Every driver shall be responsible for ensuring that clothing cannot be fouled or caught up in the machinery, chains, belts or any moving parts of his or her mower. Guards must be fitted to prevent this.

46. Fire extinguisher:

Every team shall have a fully charged and current fire extinguisher rated for the fuel type used in his/her mower or mowers in its' equipment.

Part 7—Pit and Track Areas:

47. Persons not permitted on grid:

No unauthorised person shall be permitted on the grid-only mowers, riders, Steward or Starter.

48. Separate pit areas permitted:

Individual pit areas which have been designated for specific purposes such as an area for maintenance or repairs using power tools are compulsory.

49. Guest pit pass:

A guest pass is only issued by the President or Vice-President. The guests must wear a fluoro jacket to identify themselves whilst in the pit area. It is not an all-day pass, but may be issued for visitors such as film crew, journalists or prospective mower builders.

50. Re-fuelling

At any time fuel is being added to a mower;

- a) The driver must have dismantled the mower; and,
- b) The mower engine must be turned off; and,
- c) At any time fuel is being added to a mower, a correctly rated fire extinguisher must be in the hands of an adult crew member who is present for that purpose.

51. Dismounting from mowers:

Mowers must be completely stopped and stationary before a driver dismount.

52. Unauthorised persons on track:

All persons who have not been authorized by these Rules shall be denied access to the track area. All flag marshals' must remain at their designated posts unless instructed to do so.

53. Pit Crew:

Each driver is allowed 1 pit crew over the age of 14 who must wear a high visibility shirt/vest with the mower number applied. Pit crew must attend the initial and subsequent drivers brief and be in attendance during scrutineering. Before being permitted to enter track or pit areas shall sign and submit a release or indemnity in the prescribed form discharging AROLMRA from all liability.

52. Displaying of pit pass:

All authorized persons entering the track or pit areas must clearly display a pit pass or produce same immediately on request.

AROLMRA Racing Rules

53. Children:

No child under the age of 14 is permitted to be in the pit or track area at any time, with the exception of "junior" drivers that must be signed in and registered to race for that particular race meet.

54. No pets on pit or track area:

No pets are allowed on the pit area or on the track area.

55. Smoking and alcohol:

There will be no smoking or consuming of alcohol in the pit or track areas at any time.

56. Vehicles permitted on track area:

No vehicles other than race mowers or official vehicles such as tow vehicles or track maintenance vehicle shall be on or near the track area.

Part 8—Technical Inspections

59. Mowers must be approved for participation:

The Technical Inspector in any event must first approve any mower. Any serious faults or safety issues will be noted in logbook and result in inability to compete until rectified. Issues of a non-serious nature at scrutineer discretion may be allowed to compete on said day but will have noncompliance recorded in logbook and must have it rectified before the next race meeting. Failure to comply with scrutineers/logbook instructions will result in riders not competing in any further races until breaches have been rectified.

60. Re-inspection may be conducted at any time:

At any time deemed necessary, the technical inspector may require the driver to participate in a re-inspection of the mower before participation can continue.

61. Unsafe or unstable construction:

The Technical Inspector may refuse any mower on the grounds of unsafe or unstable construction.

62. Re-inspection after an incident;

Drivers involved in an accident must be re-inspected in the pit area.

63. Technical Inspector to complete report of inspection:

The Technical Inspector shall complete a Technical Inspection Report in the prescribed form, which declares the mower is either approved or temporarily not approved for participation; and must sign log book after inspection.

64. Driver responsibility to designate correct mower classification:

It is the responsibility of the driver to correctly designate the engine type, size and event classification.

65. AROLMRA has the right to reject any mower:

AROLMRA Racing Rules

AROLMRA reserves the right to reject at any times any mower which in their opinion represents an attempt to defeat the spirit of these Rules, even though such mower complies with the letter in these Rules.

Part 9—General Provisions:

66. Compliance with the Rules:

Any AROLMRA event conducted at any location must comply with these Rules

67. Drivers to attend all driver`s meetings:

As AROLMRA's commitment to safety, all drivers and Marshalls are required to attend all announced drivers and Marshalls meetings and then all drivers are to walk the track as a group. Failure or refusal to attend may result in a refusal to race.

68. Bumping prohibited:

Deliberate or persistent bumping will not be tolerated.

69. Responsibility for safe racing:

The responsibility for a safe race rests with all drivers. Care needs to be taken when overtaking or passing another mower.

70. Obedience to flags:

The following flag signals will be obeyed without question— any driver failing to do so will be removed from that specific heat and depending on severity, committee discretion may disallow further competition for that race meeting.

Based on committee discretion 10 Championship points may also be removed from those failing to obey the flags.

A **GREEN** flag shall start or restart a race

A **YELLOW** flag held stationary indicates trouble ahead and drivers shall immediately reduce their speed to walking pace and maintain their positions. Overtaking under these conditions is not permitted. Drivers are not permitted to increase speed until they pass the next green flag.

A **RED** flag indicates that a dangerous condition exists and drivers must stop immediately when safe to do so and, when indicated, make their way back to the grid for a restart.

A **BLACK** flag indicates a driver is alleged to have committed a serious breach or safety concern and the indicated driver is required to immediately leave the track and report to the Flag Marshall.

An **ENQUIRY FLAG- Black with a White Diagonal Line Across it** The Indicated Driver is required to Report to The Chief Marshall at Conclusion of the Race.

A **WHITE** flag indicates one lap to go.

A **CHEQUERED** flag signifies race end.

AROLMRA Racing Rules

71. Laps counted under a yellow or red flag:

Laps will be counted under a yellow flag.

After restart from a red flag, there will be a minimum of 2 laps to complete the heat.

72. Driver responsibility if mower leaves the track:

If a driver leaves the course he/she must re-enter the course as close to the same point the mower left the course and not simply further along the track, when safe to do so. Driver must not gain any track position advantage

73. Starter can authorize crew to enter track area:

Crew may not enter onto the track at any time during any event unless specifically directed to do so by the starter and must be wearing Hi-Vis.

Part 10—General Conduct:

74. Behaviour bringing disrepute:

No member shall behave in a manner which is prejudicial to the interests of AROLMRA or behave in a manner endangering the safety of others.

75. Intoxication:

No one shall be permitted to;

- a) participate in any event; or,
- b) enter the pit area; or,
- c) enter the track area;-

Whilst he/she is in any way affected or under the influence of intoxicating liquor or drug.

76. Prohibited substances and drugs:

No illicit drug or prohibited substance shall be tolerated on the venue grounds at any time.

77. Exemption:

The only exemption to 75 shall be the possession and use of a prescribed medicine, which is properly used or administered in accordance with the prescription by the person to whom the medicine is prescribed.

Part 11—Procedures:

78. Scoring:

Scoring shall be as such:

- 1st place = 6 points
- 2nd place = 5 points
- 3rd place = 4 points
- 4th place = 3 points
- 5th place = 2 points
- 6th place = 1 point.

Points totalled up during the racing season are to be collated at season end to give an overall winner for each class calling it Championship Points.

AROLMRA Racing Rules

79. Procedures for Protest during a race:

Any driver wishing to lodge a protest for any alleged incident or breach of race etiquette during the race is required to remain on his/her mower and not leave the track until such time as the protest has been acknowledged or determined and he/she has been instructed to leave the track area by the Steward.

80. Procedures for Breach of the Rules:

A report of or allegation of a breach of these Rules must be dealt with in accordance with the provisions of the Associations Incorporation Act 1981 and the Model Rules of the Association.

81. Procedures for other breaches:

Any protest lodged by a driver during a competition event may be determined by a person in charge of the venue where the breach is alleged.

82. Dummy Grid:

Prior to entering the track area to compete, drivers will line up in a dummy grid position at the exit area from the pits. Rotating clockwise grid placement to be used.

83. Track specifications- not included

For all Specifications relating to track dimensions, Marshalls and Steward duties, safety barriers and other guidelines for event management, reference should be made to the “Risk Management for Event Organisers” as specified by the AROLMRA Committee of Management.

84. Grievance Procedure

‘As per the Model Rules of an Incorporated Association’

*****If you are not prepared to be part of the solution then you are part of the problem*****

*****If you are going to speak up then you must be prepared to step up*****

Division 3—Grievance procedure

25 Application

- (1) The grievance procedure set out in this Division applies to disputes under these Rules between—
 - (a) A member and another member;
 - (b) A member and the Committee;
 - (c) A member and the Association.
- (2) A member must not initiate a grievance procedure in relation to a matter that is the subject of a disciplinary procedure until the disciplinary procedure has been completed.

AROLMRA Racing Rules

26 Parties must attempt to resolve the dispute

The parties to a dispute must attempt to resolve the dispute between themselves within 14 days of the dispute coming to the attention of each party.

27 Appointment of mediator

- (1) If the parties to a dispute are unable to resolve the dispute between themselves within the time required by rule 26, the parties must within 10 days—
 - (a) Notify the Committee of the dispute; and
 - (b) Agree to or request the appointment of a mediator; and
 - (c) Attempt in good faith to settle the dispute by mediation.
- (2) The mediator must be—
 - (a) A person chosen by agreement between the parties; or
 - (b) In the absence of agreement—
 - (i) If the dispute is between a member and another member—a person appointed by the Committee; or
 - (ii) If the dispute is between a member and the Committee or the Association—a person appointed or employed by the Dispute Settlement Centre of Victoria.
- (3) A mediator appointed by the Committee may be a member or former member of the Association but in any case, must not be a person who—
 - (a) Has a personal interest in the dispute; or
 - (b) Is biased in favour of or against any party.

28 Mediation process

- (1) The mediator to the dispute, in conducting the mediation, must—
 - (a) Give each party every opportunity to be heard; and
 - (b) Allow due consideration by all parties of any written statement submitted by any party; and
 - (c) Ensure that natural justice is accorded to the parties throughout the mediation process.
- (2) The mediator must not determine the dispute.

29 Failure to resolve dispute by mediation

If the mediation process does not resolve the dispute, the parties may seek to resolve the dispute in accordance with the Act or otherwise at law.

AROLMRA Racing Rules

Grievance Procedure Flow Chart

SCHEDULE 1 ¾ Guidelines for Technical Inspections:

Guidelines for Technical Inspections:

Overview:

The person or persons assigned the task of inspecting competition mowers should bear in mind; the primary objective at any event is the safety of all persons.

One person shall be selected as the Chief Technical Inspector and it is he/she who will be authorized to sign the approval to race. There is no requirement for the Chief Technical Inspector to be qualified in small-bore engines, etc., but if such a person is available and willing, it is advisable to use him/her. The inspection itself should include the mower, rider and his/her equipment.

Mower Inspection:

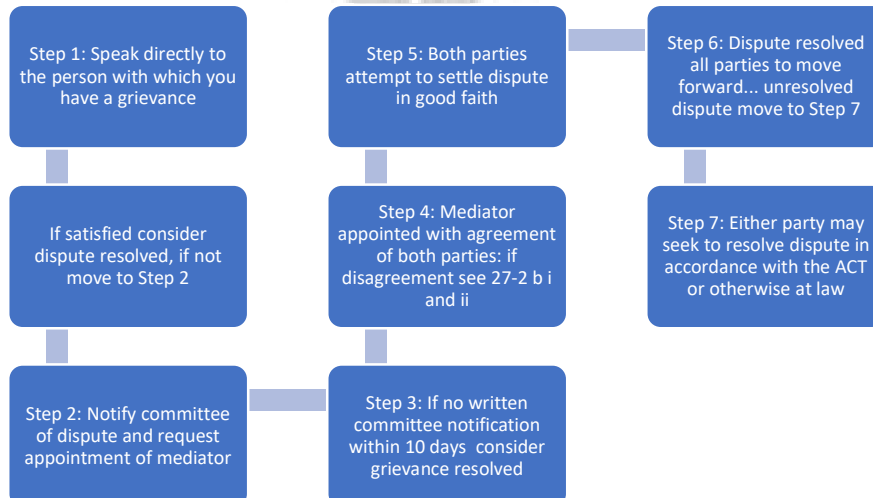
The inspection should commence with the driver in full race gear with mower logbook and fire extinguisher. Nominated pit crew to be in attendance.

The mower should be turned off.

Check- The Body for:

- Sharp edges and dangerous protrusions
- Secure panels
- Race number
- Bonnet catches operate properly
- Seat is secure
- No suspension
- Chassis complies

Check the Mechanics for:



AROLMRA Racing Rules

- Wheels approved construction
- Bearings serviceable
- No tractor type tread(lug tread pattern)
- Chain/belt guards in place and serviceable
- Engine securely mounted
- No oil leaks
- Exhaust fitted and secure
- Petrol tank mounted correctly and securely
- Petrol tank construction of an approved type
- Fuel is an approved fuel
- Steering wheel mounted securely (if used)
- Handlebars (if used) are plugged at the end.
- Mower has an approved kill switch fitted and working
- Battery is securely and safely mounted
- Brakes are effective
- Have the driver apply the brakes (while seated on the mower) and try to move the mower. Do the wheels turn?
- Have the driver start the engine; pull the lanyard (kill switch cord). Does the engine stop immediately?

The Driver:

Driver equipment should include:

- Log book
- Full cover clothing-race suit or motocross clothing
- Gloves
- Approved helmet-AS1698 and correctly fitted and fastens securely.
- Approved neck brace, correctly fitted and fastened securely.
- Boots (footwear) of approved kind
- Correctly rated fire extinguisher in equipment • Driver and crew completed indemnity documentation
- Driver`s membership is current?
- Eye/Face Protection

Complete and sign logbook and instruct driver to submit to nominated race officials.



Log Book Sighted _____ Mower # _____ Class _____

Australian Ride On Lawn Mower Racing Association Inc. A0040218E

ABN 23 795 075 312

Contract to Participate in Competition and/or Practice Events

Warning: This is an important document, which affects your legal rights and obligations.

Read it carefully. Do not sign it unless you are satisfied that you understand it.

I, _____

Enter your full name

Of _____

Enter your complete address including postcode

HEREBY AGREE with the Australian Ride On Lawn Mower Racing Association Inc., and all other individuals, organizations and bodies corporate whose names appear in Schedule 1 that I am by agreement entitled to participate in the Lawn Mower Racing activity listed in Schedule 2 at the venue listed at Schedule 3 on the terms and conditions set out in this document.

Acknowledgement of Risks, Dangers and Obligations.

I ACKNOWLEDGE that the sport of lawn mower racing is dangerous and that by engaging in the sport and participating in (the Meeting) I take and am exposed to certain risks and dangers, and am under certain obligations

as follows -

- (a) That I may be injured, physically or mentally, and I may be killed;
- (b) That my machinery or equipment may be lost, damaged or destroyed;
- (c) That other competitors may ride dangerously and with lack of skill;
- (d) That track or event conditions may be hazardous and may vary without warning or predictability;
- (e) That organizers, officials, landowners, track operators and any agents or representatives of those in charge of meetings are frequently obliged to make decisions under pressure of time and/or events;
- (f) That any policy of insurance of or in respect of my life or physical or mental health may be avoided;
- (g) That there may be no or inadequate facilities for treatment or transport of me if I am injured;
- (h) That I have an obligation to myself and to others to compete safely and within the Rules of Competition.

Indemnity Given to Organisers

IN CONSIDERATION of the acceptance of me as an entrant in (the meeting)

I AGREE TO INDEMNIFY the organizers and each of them in the following manner -

- (a) That I participate in (the Meeting) at my sole risk and responsibility;
- (b) That I accept that (the Venue) as it stands with all or any defects hidden or exposed;
- (c) That I indemnify and hold harmless the organizers, their respective servants, agents or officials against any actions or claims which may be made by me or on my behalf or by other parties for or in request of or arising out of my death or any injury loss or damage caused to me or to my machinery or equipment whether caused by negligence, breach of contract or in any other manner whatsoever.

Schedules

1. Australian Ride On Lawn Mower Racing Association Inc.
2. (Club or Promoter)
3. (Landowner/Occupier)

Schedule 2 (the Meeting)

Schedule 3 (the Venue)

I have read understood and agree to the rules of AROLMRA

Entrant's Signature _____ Date ____/____/____



Australian Ride On Lawn Mower Racing Association Inc. A0040218E
ABN 23 795 075 312

Minor Release Form

Warning: This is an important document, which affects your legal rights and obligations.
Read it carefully. Do not sign it unless you are satisfied that you understand it.

I/We, _____
Parent/Guardian

Of _____
Enter your complete address including postcode

DO HERBY ACKNOWLEDGE AND DECLARE THAT -

1. I/We are the parent/legal guardians of _____ who has requested permission to participate in events conducted by the Australian Ride On Lawn Mower Racing Association Inc., as arranged from time to time.
2. The above-named was born on ____/____/____ and has not yet reached the age of 18 years.
3. I/We are fully aware of the implications and dangers involved in the sport of Lawn Mower Racing.
4. I/WE have read the Rules of the Australian Ride on Lawn Mower Racing Association Inc., and I/We understand them and agree to abide by them
5. I/We consent to our child participating in these events.
6. In consideration of our child being accepted as a participant I/We HERBY INDEMNIFY the organisers, land owners, the Australian Ride On Lawn Mower Racing Association Inc. and their respective representatives in the same manner and to the same effect as if I/We were entrant/s.

Signature _____ Date: ____/____/____

NB: All alterations and deletions where appropriate should be initialled by the signatory. This practice is recognised as further proof that the signatory has read this document in its entirety and understands its contents.